

Wiltshire Council

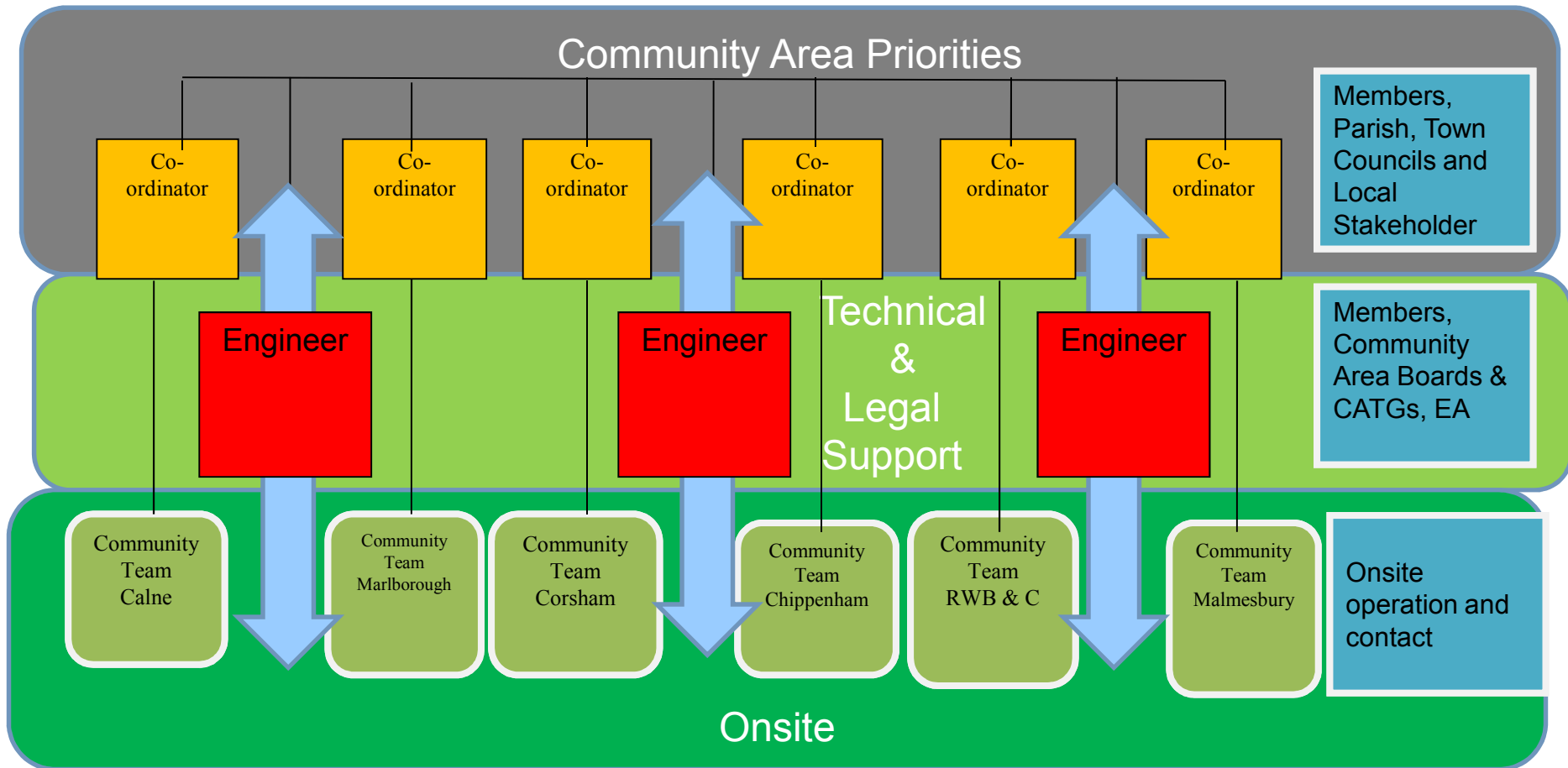
Where everybody matters



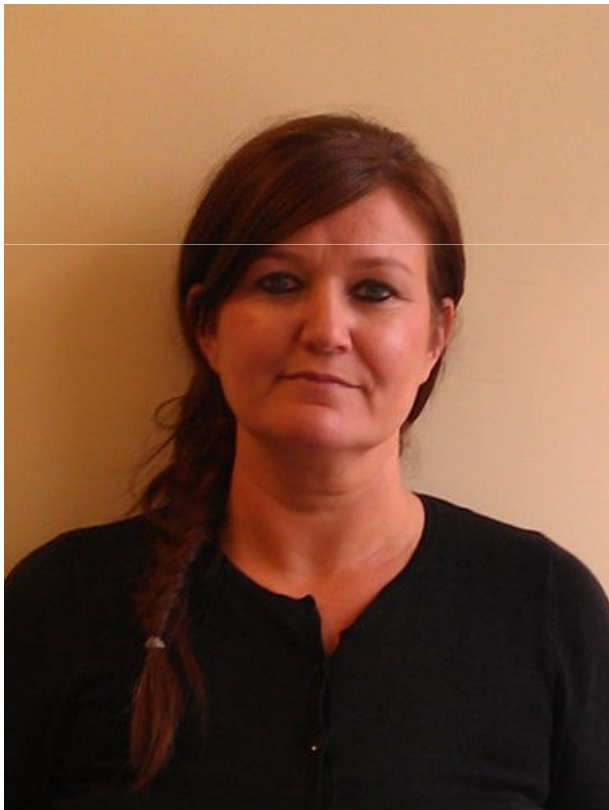
Local Highways &  
Streetscene



## New Structure



# Member of Public Contact



- Members of the Public –
  - Customer Care Unit 0300 456 0100 e-mail [clarence@wiltshire.gov.uk](mailto:clarence@wiltshire.gov.uk)
  - Clarence 0800 23 23 23 or 01225 777234 from landlines
- Website [www.wiltshire.gov.uk](http://www.wiltshire.gov.uk)

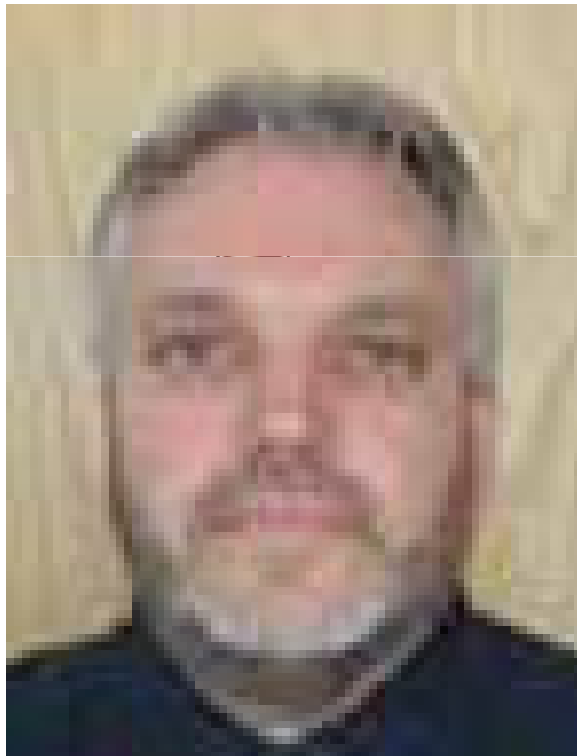
## Parish/ Town Council Contact



- The Community Coordinator for your area is Tracy Myers
- He is based at the Wilton Depot, Salisbury.

A **Community Coordinator**, is responsible for the management of the Local Highway and Streetscene assets and the community priorities within one community board area. Feedback to parish/ town council is undertaken by the Coordinator to one point of contact agreed by the local council..

# Community Area Board Contact



- The Engineer for your area is David Button
- He is based at the Wilton Depot, Salisbury.

An **Engineer** provides the technical support and strategic service provision across two community board areas. Feedback to Community Area Boards is undertaken by the Engineer at the Community Area Board Transport Groups.



# Questions